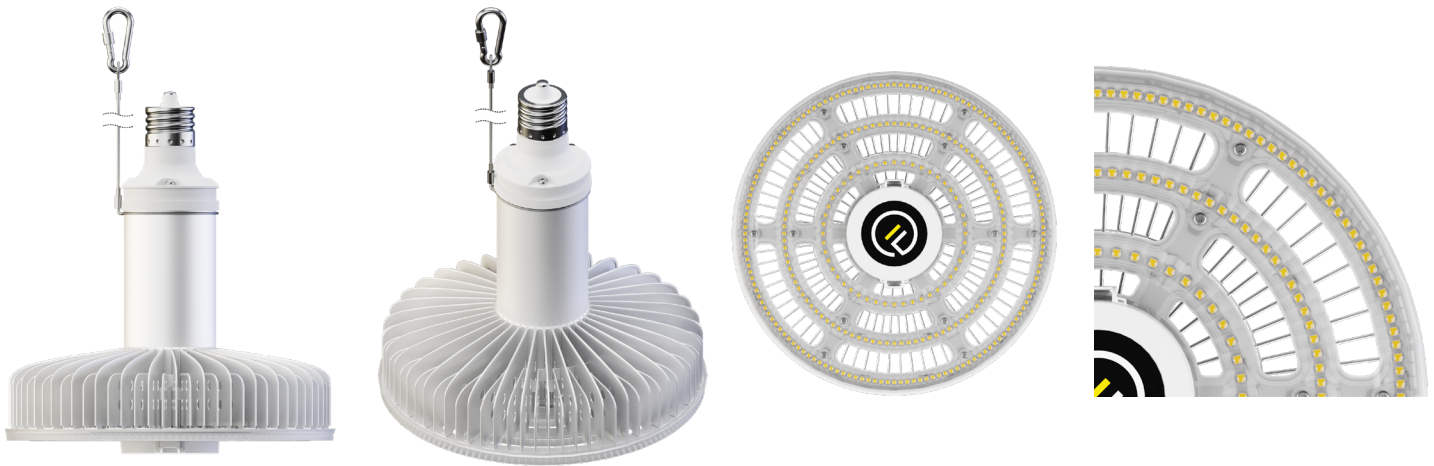


Date                      Project                      Part #



## Features

- Up to 28,905 Lumens, 175 L/W @ 80 CRI
- 100-277 VAC
- Low Glare, UGR<16
- 80 CRI Standard
- Wireless and non-wireless control options
- Over-temperature protection
- Five Year or 50,000 Hour warranty<sup>2</sup>
- See Website for installation Guide and IES File

## Certifications

- UL/ULC, DLC Standard<sup>5</sup>
- IP52 / UL damp listed standard
- Integrated/embedded networked lighting control Luminaire-level Lighting Control (LLLC)



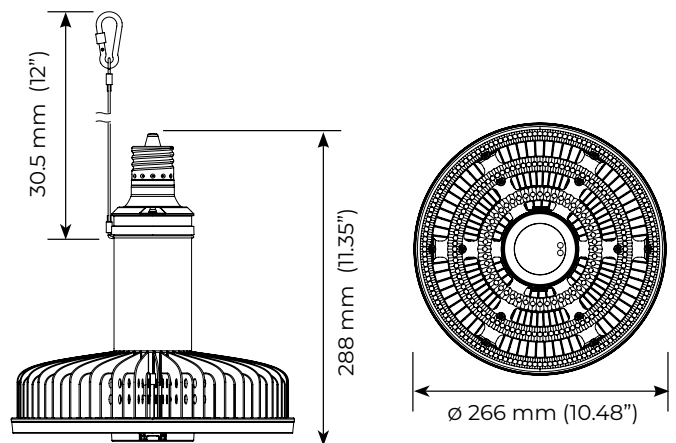
**IP52**

## Control Options

- Wireless:
  - Synpase, Casambi, Avi-On
- Non-Wireless:
  - Occupancy & Daylight, Manual Power Set
- Dims to 10% then to off

## Mechanical

- Mogul Base
- Vertical Orientation
- 3.86 lb / 1.75 kg
- 30 cm Safety Harness included



1. Unless otherwise specified, all values are typical at 25°C, 240VAC, CCT ±300K with ±10% tolerance  
 2. [See limited warranty for details](#)  
 3. Specifications subject to change without notice

4. Not intended for use in environments containing airborne corrosive agents such as chemicals, solvents, or cutting fluids  
 5. DLC Premium Listed SSL - Not all product variations listed on this page are DLC qualified.

Date

Project

Part #

## Photometry

- Integrated Patented Optic provides low glare
- UGR<16
- Diffuser and uplight accessories sold separately

## Lumens

CRI	Series	Power	Accessories	Lumens @ CCT	
				4000K	5000K
80	V3M	165W	None	28,905	28,905
80	V3M	165W	V10 Uplight	28,523	28,523
80	V3M	165W	V10 Uplight + Reflector	28,296	28,296

## Electrical (VH & VL Drivers)

- VL: 100-277 VAC, 50-60Hz
- <1% Flicker
- PF > 0.9, THD<20%
- Surge: 6 kV (L-N)

	Amps @ Line Voltage (VAC)					
	100V	110V	120V	220V	240V	277V
165W	1.65A	1.50A	1.38A	0.75A	0.69A	0.60A

Date Project Part #

### Applicable Regions

- USA, Canada



### Summary

- Line Voltage 100-277VAC
- Certified to UL and DLC Standard
- IP52 and UL Listed for damp locations
- Control modules and optical accessories are shipped separately and installed to the base lamp model by the user
  - Can be installed at the factory - Inquire for availability
- Non-quick ship items may be subject to longer lead times and MOQ
- Additional CCT / CRI / Power combinations may be available as a custom order - Inquire for availability

### Part # Key

- Not all combinations are valid or readily available - See ordering table for standard models
- Call for availability of custom features - MOQ may apply

Series		Lamp Base		Power		CRI		CCT		Driver		Finish		Optics		Accessory (Field Install)		Control Module (Field Install)		Other	
V3M	288LEDs	X39	EX39	165	165W	8	80 CRI	40	4000K	VL	100-277V	AN	Anodized	B90	90° Beam	000	None	000	None	FL	IP52
								50	5000K							V10	10% Uplight	OC1	Occupancy & Daylight		
																		BLE	Bluetooth (Avi-On)		
																		CSM	Casambi		
																		SYN	Synapse		
																		PRI	Manual Set Dim		

### Ordering Table

- Additional combinations may be available - Inquire for availability

Power	CRI	CCT	Lumen	L/W	Accessories	Control	Part Number
165	80	4000K	28,905	175	None	None	V3M-X39-165-8-40-VL-AN-B90-000-000-FL
165	80	4000K	28,523	175	V10 Uplight	None	V3M-X39-165-8-40-VL-AN-B90-V10-000-FL
165	80	4000K	28,523	175	V10 Uplight	Synapse	V3M-X39-165-8-40-VL-AN-B90-V10-SYN-FL
165	80	5000K	28,950	175	None	None	V3M-X39-155-8-50-VL-AN-B90-000-000-FL
165	80	5000K	28,523	175	V10 Uplight	None	V3M-X39-165-8-50-VL-AN-B90-V10-000-FL
165	80	5000K	28,523	175	V10 Uplight	Synapse	V3M-X39-165-8-50-VL-AN-B90-V10-SYN-FL