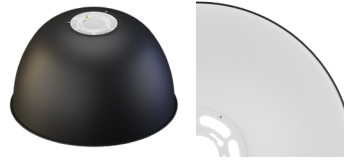


Date Project Part #



Gray Exterior/White Interior

Standard Finish Options*



Black Exterior/White Interior



Black Exterior/Gold Interior

* Inquire for custom finish

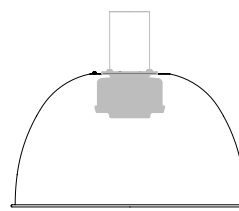
Features

The optional reflector is available to create a traditional high-bay aesthetic. However, these reflectors are not needed and its installation does not substantially alter the light distribution. The Filamento lamp has integral optics that create a cutoff at 50°, eliminating glare so an external reflector is not required.

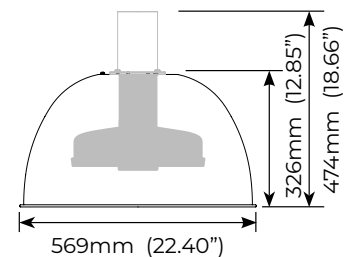
- Solid aluminum reflector
- Reflectors are vented to allow for airflow
- Compatible with all ADP mounting bases (except SUS)
- Compatible with all mogul base lamps
- Easy to install - Simply twist and lock assembly to ADP mounting bases, no tools required
- Optional diffuser, drop lens, wireguard accessories
- ADP mounting bases are sold separately
- See website for Installation Guide

Mechanical

- 1.54 kg / 3.4 lb
- Solid aluminum body
- Inquire for custom colors

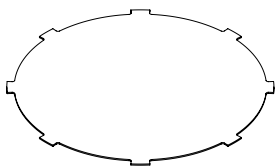


22" Reflector shown with VA6 Lamp

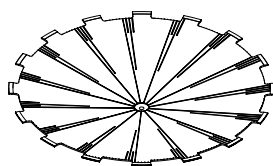


22" Reflector shown with V2L/V2M Lamp

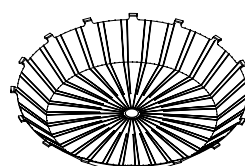
Compatible Accessories



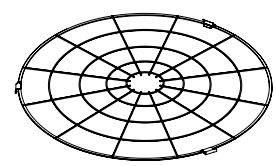
22" UGR Diffuser
ACC-022-UGR-000-FL



22" Conical Lens
ACC-022-CNL-000-FL



22" Drop Lens
ACC-022-DRL-000-FL



22" Wireguard Black
ACC-022-WBK-000-FL

Ordering Information

Description	Part Code	Part #
Aluminum Bell 22" Reflector - Gray Exterior/White Interior	03856	RFL-AB22-GR2WH2
Aluminum Bell 22" Reflector - Black Exterior/Gold Interior	03702	RFL-AB22-BK2GD2
Aluminum Bell 22" Reflector - Black Exterior/White Interior	03703	RFL-AB22-BK2WH2

1. Inquire for custom color combinations
2. [See limited warranty for details](#)
3. Specifications subject to change without notice

4. Not intended for use in environments containing airborne corrosive agents such as chemicals, solvents, or cutting fluids